

*Serving Industries Worldwide*

# ***Corrugator Machine and Paper Mill Bearings***



*Manufacturers of Ball and Roller Bearings*



**SCHEERER**  
BEARING CORPORATION



*We understand that the ideal bearings for corrugator rolls will last the life of the rolls under proper operating and lubrication conditions. Scheerer Bearings are designed to meet that requirement.*

# **Maximize Lifetime. Minimize Maintenance.**



**S**cheerer is always thinking about the economics of its customers. We respect the tremendous investment that a corrugator and its associated converting equipment represents. We understand the expense of maintenance, repair and redundancy in manufacturing. Operational capacity is critical to profitability. For a partner who sees your big picture, you can count on Scheerer.

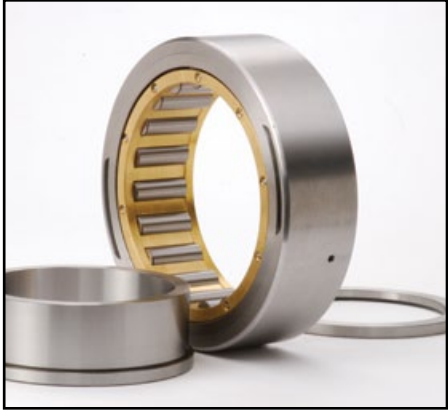
#### **The Right Bearing + The Right Lubrication = Optimum Life**

Manufacturing Maintenance Managers would ideally like the critical bearings to last the life of the corrugator rolls. New coatings can significantly increase the life of the rolls. That makes the quality and condition of the bearings even more critical in order to maximize efficiency and minimize expensive downtime.

#### **Designed for Every Corrugator Manufacturer**

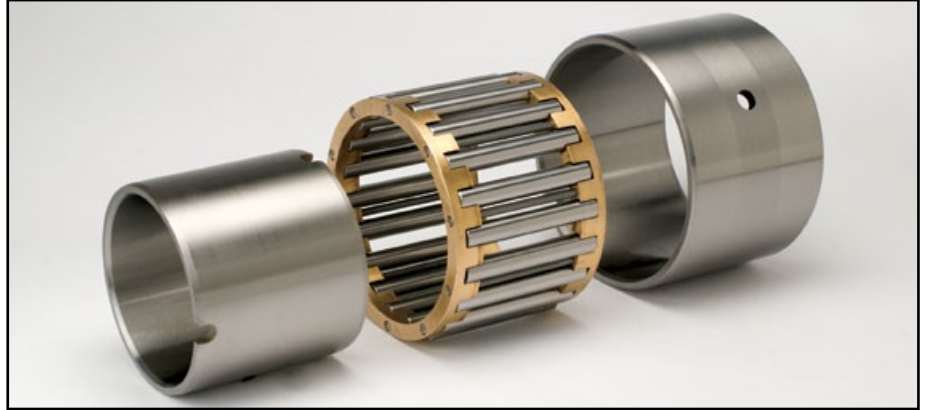
Scheerer bearings are designed to perfectly match the specifications of every corrugator manufacturer as well as slitters, printers, tapers, gluers, stitchers, folders, diecutters, laminators and conveyors. Our corrugator customers rely on Scheerer for competitive advantage. We understand that small modifications can mean dramatic productivity gains. Talk to Scheerer about how to get the most from your bearings.

# *Serving the Corrugator Industry for Nearly Half a Century*



## **Radial Roller Bearings with Self-aligning O.R.**

Single and Double Row Self-aligning cylindrical roller bearings allow the bearing to operate under the best conditions even under severe misalignment to provide the highest operational reliability and longest service life. They are produced in both "axially-fixed" and "axially-floating" configurations. The latter compensates for thermally induced elongation and expansion.



## **Corrugator Roller Bearings**

Corrugator Cylindrical Roller Bearings are specifically designed to allow axial movement of the rings. This floating configuration allows dynamic compensation of axial movements.

## **Guarantee**

Scheerer Bearing guarantees that any bearing we manufacture or rework is free from defects in workmanship or material. Any bearing which is proven to be defective within one year from date of purchase will be replaced or reworked free of charge if the defective bearing is returned, charges prepaid, to Willow Grove, PA and the bearing is found to have been properly installed, lubricated, and used.

## **We Routinely Rebuild Ultra-large Bearings up to 100 in. O.D.**

Our rebuild capabilities include radial ball and roller bearings, ball and roller thrust bearings from 2 inch I.D. to 100 inch O.D. in many different designs and materials. Scheerer will rebuild any type or style of bearing from any manufacturer.

## **You Know in Advance What You Are Getting and How Much it Will Cost**

When you send us your bearings, our technicians inspect them thoroughly on arrival. A simplified rating system is used to determine the work needed to restore the bearing's operational parameters and a firm estimate is prepared.



# ***Predictive Maintenance, Bearing Optimization and Other Best Practices***

*At Scheerer Bearing, customers will find engineering and productivity partners at your service — from design and specification to installation and operational monitoring.*

## **Predictive Maintenance of Critical Bearings**

Predictive maintenance of critical bearings in high productivity environments like paper and corrugated board manufacturing has become fundamental to minimize unscheduled downtime.

Scheerer Bearing works with customers to monitor and inspect bearings throughout mill operations. Our experts can help identify early signs of fatigue and component failure that could easily go unnoticed by an untrained eye.



## **Bearing Optimization. The Right Bearing in the Right Place**

Our diverse experience across the entire spectrum of bearing types ensures you have the optimum bearings for the various needs of paper manufacturing.

Bearings that compensate for misalignment, simplify lubrication and incorporate advanced, high-durability materials suited for the rigors of heavy industry are all considerations to maximize your plant efficiency.

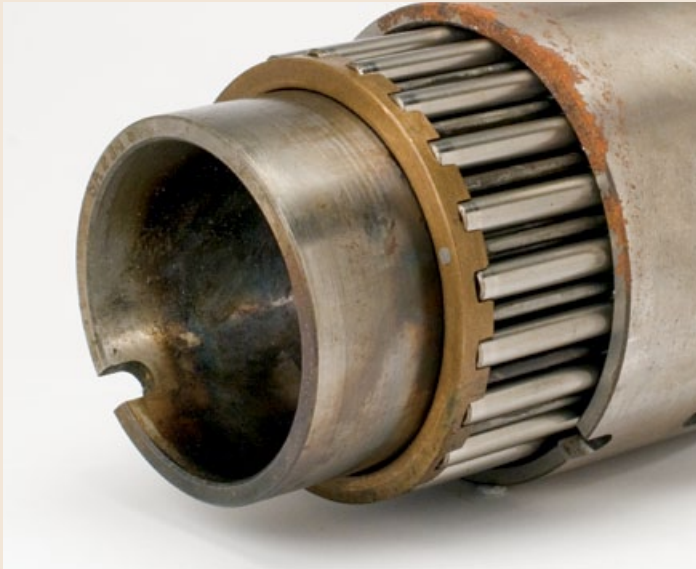
## **Installation and Proper Lubrication**

It seems so obvious, but industry studies show that incorrect installation and improper lubrication programs are the most common causes for bearing failure and unplanned mill shutdowns. Work with us to ensure your maintenance team fully understands how to install the bearing and the complexities of lubrication. As they say, knowledge is power. We've served leading mills and corrugators for decades. Put our knowledge to work for your operations.



# ***Bearing Rebuilding & Reconditioning Program***

*The photographs below represent (left) a bearing submitted for reconditioning, and (right) the bearing as it would leave our reconditioning facility.*



## **Rebuilding vs. Replacement: The Advantage is Obvious**

Scheerer can typically rebuild a large bearing and deliver it to you in a fraction of the time required to manufacture a new bearing. We also provide emergency repair service (sometimes within a 24-hour period).

With companies looking ever closer to the bottom-line, we find customers with large bearing investments are looking to us to help them maximize the service lifetime of their bearings and their heavy machinery. Some companies schedule planned reconditioning of critical bearing components to ensure business operations stay on schedule at maximum output.

## **Serving All Major Industries**

Whether your application is earth moving, mining, pulp and paper manufacturing, wind energy, oil drilling, steel, utilities, material handling or transportation, we can reduce your downtime with our high-efficiency quick-turn rebuild and reconditioning program.

## **We Routinely Rebuild Ultra-large Bearings up to 100 in. O.D.**

Our rebuild capabilities include radial ball and roller bearings, ball and roller thrust bearings from 2 inch I.D. to 100 inch O.D. in many different designs and materials. Scheerer will rebuild any type or style of bearing from any manufacturer.

## **You Know in Advance What You Are Getting and How Much it Will Cost**

When you send us your bearings, our technicians inspect them thoroughly on arrival. A simplified rating system is used to determine the work needed to restore the bearing's operational parameters and a firm estimate is prepared.

***Fraction of the Time. Fraction of the Cost.  
Factor in a Reconditioning Program for New Bearings.***

# ***Scheerer Product Line & Services***

## **RADIAL BALL BEARINGS**

Single Row Deep Groove  
Double Row Deep Groove  
Angular Contact  
Double Row Angular Contact  
Max-Capacity  
Self-Aligning  
Four Point Contact  
Split Inner Race  
Reciprocating  
All Special Types

## **BALL THRUST BEARINGS**

Flat seat-Grooved Races  
Flat seat-Flat races  
Self-Aligning  
Banded  
Single or Double Acting  
Combination  
Angular Contact  
All Special Types

## **OTHER PRODUCTS**

Combination Radial and Thrust Bearings  
Large Diameter to over 100"  
All Types of Special Bearings  
Hardened and Ground Sleeves  
Bearing Components  
Slewing Ring Bearings

## **RADIAL ROLLER BEARINGS**

Cylindrical  
Single Row  
Multi-Row  
Cross Roller  
Journal  
All Special Types

## **ROLLER THRUST BEARINGS**

Plain Type  
Washers Only  
Self-Aligning  
Crane Hook  
Combination  
Single Acting  
Double Acting  
All Special Types

## **SERVICES**

Bearing Repair and Reconditioning  
Clearance Changes  
Bore Tapering  
Flush Grinding & Preloading  
W-33 and W-26 Feature Additions  
Snap Ring Grooving  
Inspection Services  
Ceramic Ball Installation  
Special Coating Applications



*Scheerer Bearing Corporation  
633 Davisville Road  
Willow Grove, PA 19090 USA*

*tel 215.443.5252  
fax 215.443.7513  
[www.scheererbearing.com](http://www.scheererbearing.com)*

***Corrugator Machine Bearings***